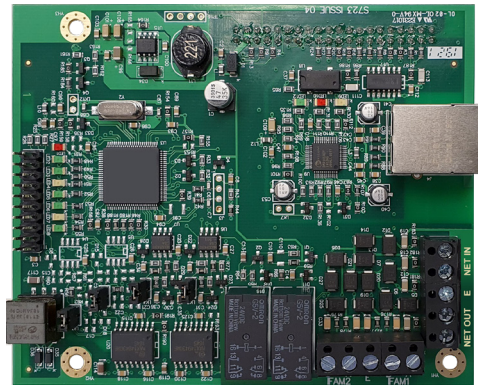


TAKTIS UL

Network Module

Features

- ▶ Compatible with Taktis UL Addressable Fire Panels and Vision Repeaters
- ▶ Full duplex RS485 comms for Taktis UL network
- ▶ Selectable network in/out baud rates
- ▶ On board diagnostic LEDs
- ▶ Single ended isolation



Description

The Taktis UL Network Module is an optional addition to Taktis UL Addressable Fire Alarm Control Panels providing supervised, enhanced high-speed network communication. The Network Module provides full Duplex RS485 output for networking of Taktis UL Panels.

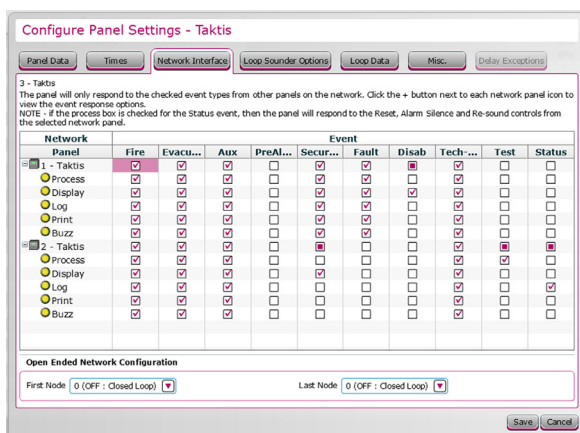
Networking Taktis UL Panels requires a Network Module to be installed in each panel on the network with a maximum of 32 panels connected in total (approval for networks of up to 127 panels pending). Networks of Taktis UL Panels allow sharing of status information between multiple panels installed across large sites.

The Network Module provides single ended isolation and weak open and short circuit monitoring in compliance with EN54-13.

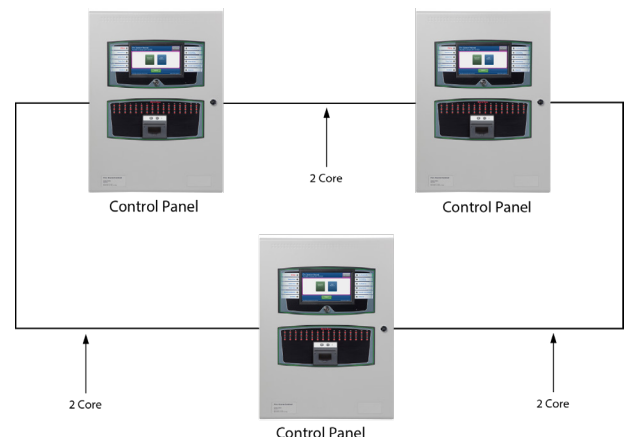
The Network Module has 11 status LED indicators providing vital diagnostic information to engineers.

Network in and out baud rates can be configured independently through the Taktis UL Panel settings, again this may be useful when using third party networking interfaces such as fibre optic converters which may operate on different baud rates.

The Network Module is also compatible with Taktis UL Vision Repeaters, the Repeater is provided with a Network Module pre-fitted as standard.



Flexible network configuration options using simple to follow PC configuration programme.



Two core loop wiring ensures network integrity by providing full isolation of faulty wiring segments.

Ordering codes	
Part no.	Description
S723-KE	Taktis UL Network Module

Specification	
Operating voltage	24V DC
Protocol	RS485
Indicators	LED 1 – Heartbeat (Red) LED 2 – TX comms Taktis network (Green) LED 3 – RX comms Taktis network (Green) LED 4 - Yellow – Internal fault Taktis network (Yellow) LED 8 – SPI Bus comms for processors (Green) LED 9 – Duplex status (Yellow), Full Duplex – on, Half Duplex – off LED 10 – Ethernet “engineering interface” LED 12 – Ethernet “engineering interface”
Baud rates	Independently selectable for comms in and out through Taktis UL Panel settings: 19200 115200 128000
Maximum distance between network nodes	1200m